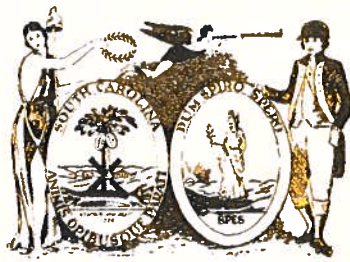


State of South Carolina
Executive Department

FILED

SEP 10 2018

Mark Hammond
SECRETARY OF STATE



Office of the Governor

EXECUTIVE ORDER NO.

2018-29

WHEREAS, the National Hurricane Center has advised that Hurricane Florence will impact the State of South Carolina, especially the coastal areas; and

WHEREAS, Hurricane Florence and the associated wind, heavy rain, localized flooding, and other severe weather, represent a significant threat to the State of South Carolina and require that the State take timely precautions to protect property, critical infrastructure, communities, and the general safety, security, and welfare of the people of this State; and

WHEREAS, on September 8, 2018, the undersigned issued Executive Order 2018-26, declaring a State of Emergency due to Hurricane Florence and placing into effect the South Carolina Emergency Operations Plan to provide for the health, safety, and welfare of residents and visitors located in the threatened areas; and

WHEREAS, as the Chief Executive of this State, pursuant to section 25-1-440 of the South Carolina Code of Laws, as amended, the undersigned is authorized to direct and compel the evacuation of all or part of the populace from any stricken or threatened area if such action is deemed necessary for the preservation of life or other disaster mitigation, response, or recovery; and

WHEREAS, the undersigned has determined that an evacuation is necessary for the preservation of life in and surrounding the threatened areas or for other emergency mitigation, response, or recovery efforts.

NOW, THEREFORE, by virtue of the authority vested in me as Governor of the State of South Carolina and pursuant to the Constitution and Laws of this State and the powers conferred upon me therein, effective at the time of twelve o'clock PM (noon), September 11, 2018, I do hereby order an evacuation of all persons located in the following Evacuation Zones in Jasper (Zones A, B), Beaufort (Zone A), Colleton (Zones A, B), Charleston (Zones A, B, and C), Dorchester (Zones D, E, and F), Berkeley (Zones B, G, H, and I), Georgetown (Zones A, B, and C), and Horry (Zones A, B, and C) Counties, with the exception of those critical or emergency response personnel, as designated by the appropriate municipal, county, or special purpose district

officials, necessary to provide essential services during or immediately following the event. All other persons are ordered to evacuate the areas as expeditiously as possible. Specific details regarding the areas for evacuation are attached to this Executive Order.

Any persons or non-Emergency Management personnel who remain in the Evacuation Zones, and any medical facilities, nursing home facilities, businesses, or other organizations or entities that allow or require persons under their charge to remain in the Evacuation Zones are responsible for the safety and well-being of themselves and of those under their charge. Any such persons or entities are charged with the knowledge that should they need the assistance of emergency personnel or services, those personnel or services may not be available or capable of coming to their aid.

FURTHER, I hereby direct that specified units of the South Carolina National Guard, at the discretion of the Adjutant General in consultation with the Director of the Emergency Management Division (EMD), may remain on duty to assist civil authorities in these areas, including Emergency Support Functions (ESF) 13 and 16, the South Carolina Department of Public Safety (DPS), and the South Carolina Law Enforcement Division (SLED), taking all reasonable precautions as necessary for the preservation of life and property. The South Carolina National Guard may supplement units as needed. DPS will remain to assist with all traffic control points as assigned and needed.

Persons in other areas near the projected path of Hurricane Florence should take all precautions necessary to ensure their protection from potential high winds, heavy rain, localized flooding, and other severe weather.

This Order is effective immediately. Further proclamations and directives deemed necessary to ensure the fullest protection of life and property during this State of Emergency shall be issued verbally by me and thereafter reduced to writing and published for dissemination within the succeeding 24-hour period.



GIVEN UNDER MY HAND AND THE GREAT SEAL OF THE STATE OF SOUTH CAROLINA, THIS 10th DAY OF SEPTEMBER, 2018.

A handwritten signature in blue ink, reading "Henry McMaster", is written over a horizontal line.

HENRY MCMASTER
Governor

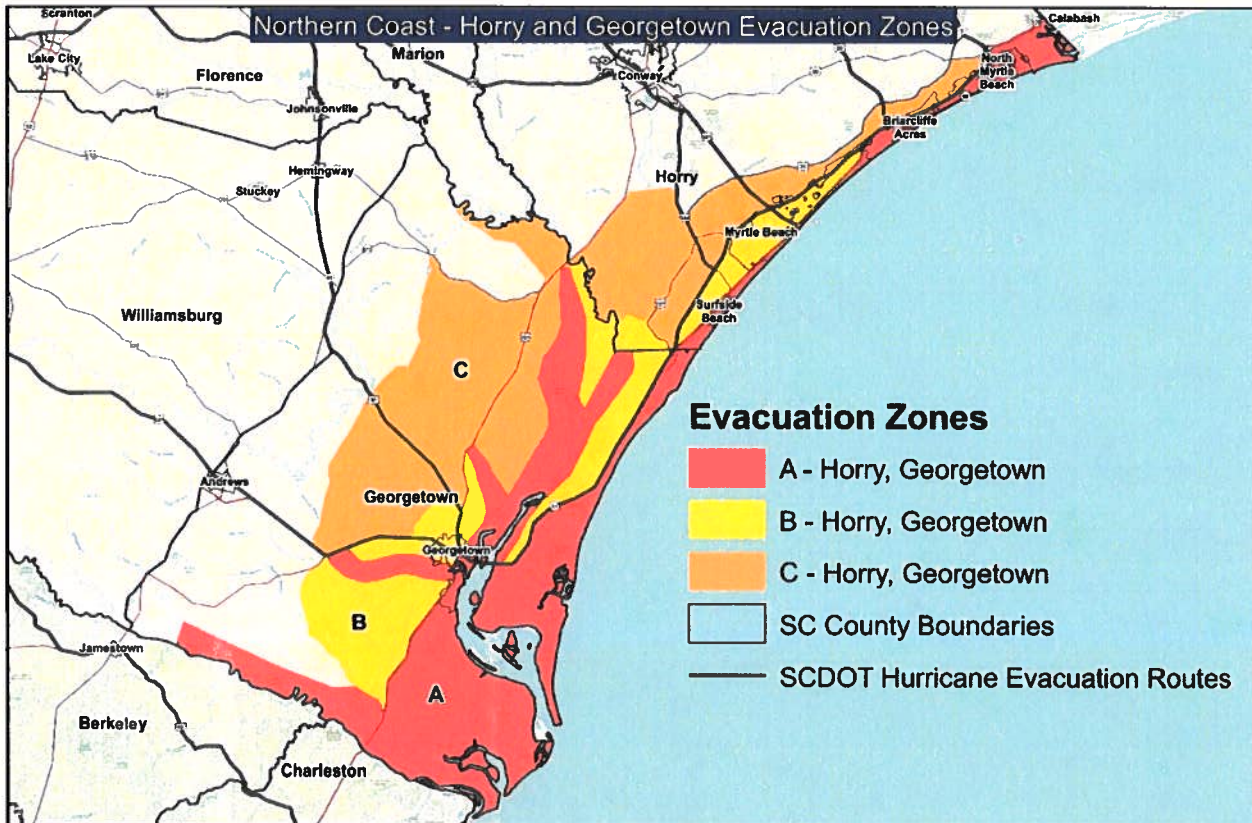
ATTEST:

A handwritten signature in blue ink, reading "Mark Hammond", is written over a horizontal line.

MARK HAMMOND
Secretary of State

ATTACHMENT 1. EVACUATION ZONES

A. Northern Conglomerate Evacuation Zones



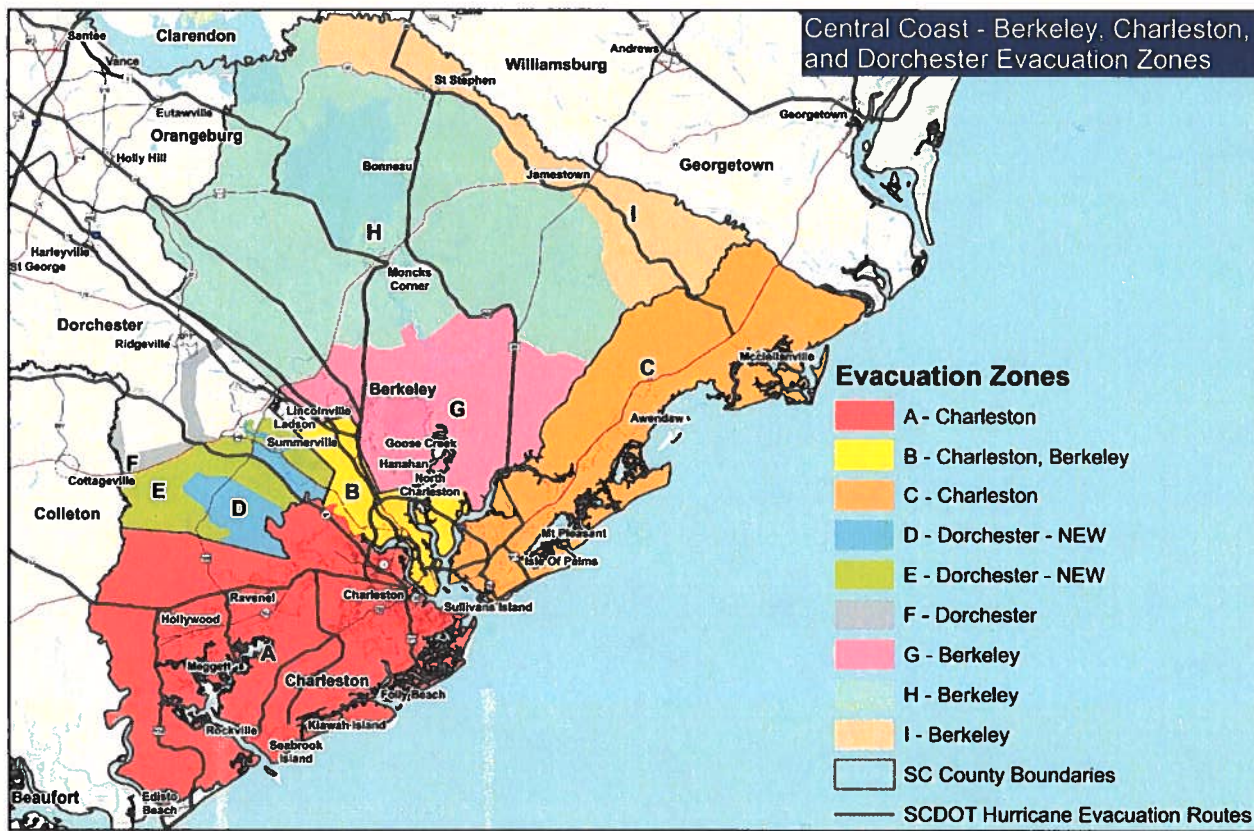
1. Horry County Evacuation Zones

- a. Zone A - All areas east of U.S. Business 17 (Kings Hwy.), up to intersection with U.S. 17 (Kings Hwy.), and then all areas east of U.S. 17 (Kings Hwy.) to the northern county line.
- b. Zone B - All areas south of Hwy. 707 and Longwood Drive, including all areas in Longwood Plantation (Blackmoor) to the Waccamaw River and all areas east of U.S. 17 Bypass (Mark Garner Hwy.) to U.S. 17 (North Kings Hwy.) and all areas east of U.S. 17 (North Kings Hwy.) to the northern county line.
- c. Zone C - All areas between Hwy. 701 and Hwy. 544, south of Brown's Chapel Avenue and Hwy. 814, plus all areas east of Hwy. 31 (Carolina Bays Parkway) to Hwy. 90 and all areas east of Hwy. 90 to U.S. 17 to the northern county line.
- d. This also includes all flood prone areas along the Waccamaw River and the Great and Little Pee Dee Rivers, as well as all mobile home residents within the County.

2. **Georgetown County Evacuation Zones**

- a. **Zone A - Areas east of Hwy. 17 to the Atlantic Ocean from the South Santee River and north to the Horry County line, including Sandy Island; areas east of Dawhoo Lake, and south of Walker Road and Powell Road to the South Santee River; all low-lying areas along the Waccamaw River, Great Pee Dee River, Black River, and Sampit River south of Hwy. 521 (17A), including Maryville; and all mobile home residents within the County.**
- b. **Zone B - Areas east of Dawhoo Lake and south of Walker Road to Powell Road to the South Santee River; all areas on the Atlantic Ocean side of Powell Road to Alt. U.S. 17 to Hwy. 521 to Brick Chimney Road to Hwy. 51 to Black River Road ending at the Black River; all low-lying areas along the Waccamaw River, Great Pee Dee River, and Black River, and all areas east of them to the coast; and all mobile home residents within the County.**
- c. **Zone C - Areas east of Dawhoo Lake and south of Walker Road to Powell Road to the South Santee River; all areas on the Atlantic Ocean side of Powell Road to Alt. U.S. 17 to Hwy. 521 to Sawmill Road to Indian Hut Road to Carvers Bay Road (State Hwy. S-22-4) to Plantation Hill Road (State Hwy. 261) to Old Pee Dee Road to the northern county line; and all mobile home residents within the County.**

B. Central Conglomerate Evacuation Zones



1. Berkeley County Evacuation Zones

a. Zone B - See 3.b. below and map.

b. Zone G

- (1) Hanahan - North of Woods Avenue from end of road at east edge of rail yard to its intersection with Remount Road. North of Remount Road from its intersection with Woods Ave. to its intersection with the railroad tracks just west of Dutton Avenue. East of the railroad tracks from their intersection with Remount Road to crossing over the Goose Creek (just south of Middle Earth Nursery and Infinger Furniture).
- (2) Goose Creek/Ladson/Summerville - Including all homes and businesses northeast of the intersection of Hwy. 52 and Camelot Drive, continuing along Ryan Drive and Holly Avenue across to Westview Blvd. (includes buildings on both sides of Camelot Drive, Ryan Drive, and Holly Avenue). Crowfield Plantation from Westview Blvd. near Holly Avenue across I-26 along Ancrum Road to its intersection with Hwy. 78. Northeast of Hwy. 78 from its intersection with Ancrum Road (Ladson Road) to its intersection with Hwy. 17A (Main St.) in Summerville. Southeast of Hwy. 17A (Main Street/S. Live Oak Drive) from its intersection with Hwy. 78 to its intersection with Cypress Gardens Road.

- (3) Whitesville/Pimlico/Cordesville - South of Cypress Gardens Road from its intersection with Hwy. 17A (S. Live Oak Drive) to its intersection with Pimlico Blvd. South of Pimlico Blvd. from its intersection with Cypress Gardens Road through to its end. The area east of Wappaolah Plantation and west of the Cooper River, north of Pimlico Blvd., and south of Mepkin Abbey. Southeast of the railroad tracks from the Cooper River by Pimlico to its intersection with Hwy. 402.
- (4) Huger/Cainhoy/Wando - South of Hwy. 402 from its intersection with the railroad tracks near Cordesville to its intersection with Hwy. 41 (Hwy. 402 becomes Steed Creek Road). Southwest of Steed Creek Road from its intersection with Hwy. 41 to its intersection with Halfway Creek Road. West of Halfway Creek Road from its intersection with Steed Creek Road to its intersection with Guerins Bridge Road. West of Guerins Bridge Road from its intersection with Halfway Creek Road to its intersection with Wando River (just after Drew Lane). Northwest of the Wando River from its intersection with Guerins Bridge Road to its intersection with Nowell Creek, with the addition of Patterson's Academy. North/northeast of Nowell Creek from its intersection with the Wando River to its intersection with Rebellion Farms Place. Northeast of Rebellion Farms Place from its intersection with Nowell Creek to its intersection of Clements Ferry Road. Northeast of Yellow House Place from its intersection with Clements Ferry Road to the Cooper River (across from the Goose Creek).

c. Zone H

- (1) Huger, Cordesville, Pimlico - Northeast of Steed Creek Road from its intersection with Halfway Creek Road and its intersection with Hwy. 41. North of Hwy. 402 from its intersection with Hwy. 41 (Steed Creek Road becomes Hwy. 402) and its intersection with the railroad tracks near Cordesville. Northwest of the railroad tracks from its intersection with Hwy. 402 to its intersection with the Cooper River. North of Pimlico Blvd. from its beginning near the Cooper River to its intersection with Cypress Gardens Road with the following exception: the area east of Wappaolah Plantation and west of the Cooper River, north of Pimlico Blvd., and south of Mepkin Abbey is in ZONE G
- (2) Whitesville, Summerville - North of Cypress Gardens Road from its intersection with Pimlico Blvd. to its intersection with Hwy. 17A (S. Live Oak Drive) Northwest of Hwy. 17A (S. Live Oak Drive/Main Street) from its intersection with Cypress Gardens Road to the edge of the County.
- (3) Summerville, Lebanon, Pringletown - Northeast of the Berkeley-Dorchester county line from Hwy. 17A (Main Street) in Summerville to the western county line.

- (4) Pringletown, Sandridge, Cross, Eadytown - East of the Berkeley-Dorchester county line and Berkeley-Orangeburg county line from Pringletown to Lake Marion. Southeast of the Santee River from Lake Marion to Belle Isle Road. West of Belle Isle Road from the Santee River to its intersection with Hwy. 45.
 - (5) Pineville, Russellville, St Stephen, Alvin, Jamestown, Shulerville - Southwest of Hwy. 45 from its intersection with Belle Isle Road to its intersection with Schurlknight Road. North of Schurlknight Road from its intersection with Hwy. 45 to its intersection with Peaceful Woods Road. West of Peaceful Woods Road (becomes Greenwood Drive) from its intersection with Schurlknight Road to its intersection with Hwy. 17A. South of Hwy. 17A from its intersection with Greenwood Drive to its intersection with Tiger Corner Road. Southwest of Tiger Corner Road from its intersection with Hwy. 17A to its intersection with Horse Island Road. West of Horse Island Road from its intersection with Tiger Corner Road to its intersection with Yellow Jacket Road. South of Yellow Jacket Road from its intersection with Horse Island Road to its intersection with Slash Road. West of Slash Road from its intersection with Yellow Jacket Road to its intersection with Halfway Creek Road. Northwest of Halfway Creek Road from its intersection with Slash Road to its intersection with Steed Creek Road.
- d. Zone I - Shulerville, Honey Hill, Jamestown, Alvin, St. Stephen - East of Halfway Creek Road from its intersection with Forest Road 200 (on the Berkeley-Charleston county line) to its intersection with Slash Road. East of Slash Road from its intersection with Halfway Creek Road to its intersection with Yellow Jacket Road. North of Yellow Jacket Road from its intersection with Slash Road to its intersection with Horse Island Road.
 - e. In all cases, residents living in low-lying areas along rivers, streams, and creeks, and all manufactured housing should evacuate when announced.
2. Dorchester County Evacuation Zones
- a. Zone D - Tidal River and Creeks/Southern Swamps - All properties along the Ashley River between Ashley River Road and Dorchester Road, from the Charleston County line to Bacons Bridge Road. Properties that front the Sawmill Branch from Dorchester Road to Luden Road including Arbor Oaks, Sawbranch Apartments, Millbrook Apartments, and Creekside. Properties near Eagle Creek between Ladson Road and Parlor Road from Dorchester Road to the Charleston County line. Southeastern portions of the county in the vicinity of Bear Swamp, Horse Savannah Swamp, Fishburne Creek, and Rantowles Creek, including the Poplar Grover Community. All residents living in flood-prone areas or mobile/manufactured homes.
 - b. Zone E - Sand Hills Area/North Charleston/Wescott/Oakbrook/ Miles Jamison - Properties east of Hwy. 17A to Dorchester Road, including Summers Corner and Clubhouse Crossroads. Properties east of Orangeburg Road and South of Miles Jamison Road to the Charleston County line,

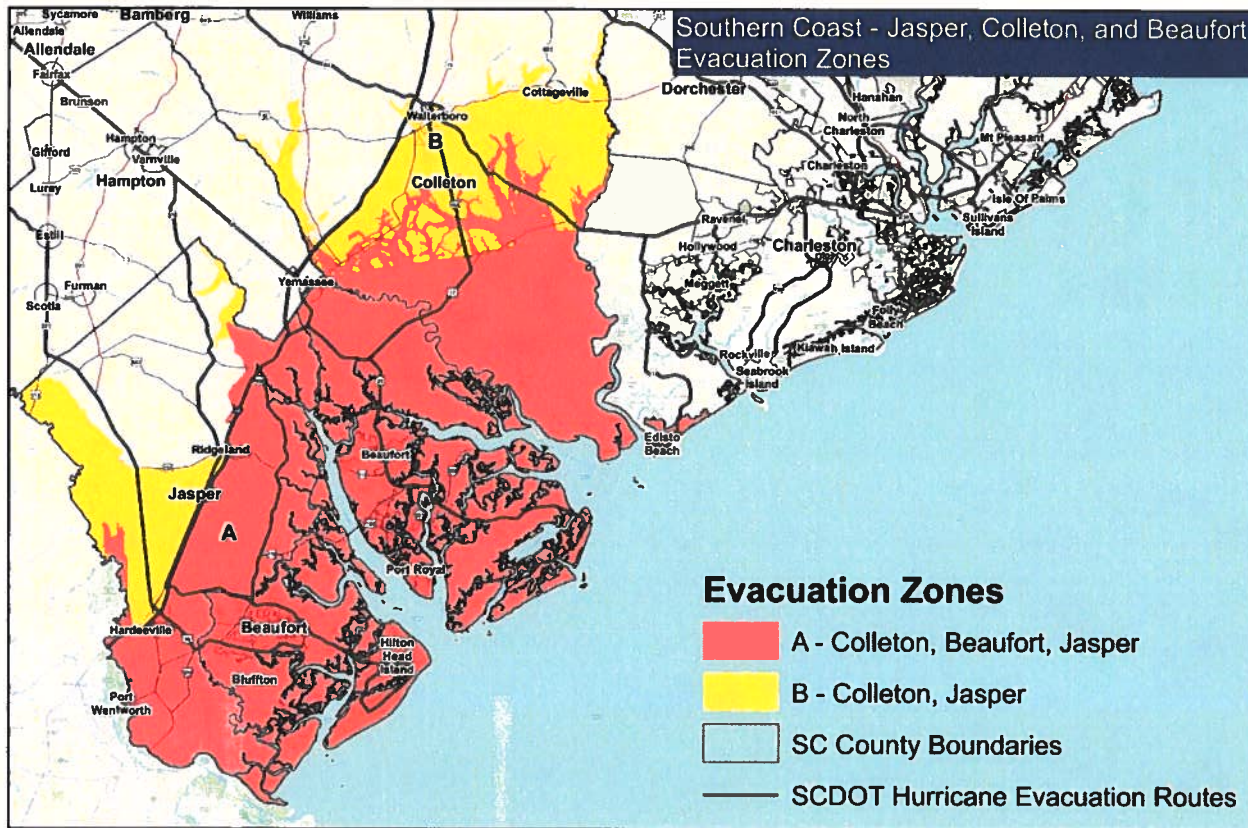
including South Main Mobile Home Park, Newington Plantation, Woodland Estates, Oakbrook, Wood Oak Park, Wescott, and the City of North Charleston in Dorchester County. All residents living in flood-prone areas or mobile/manufactured homes.

- c. Zone F - The Cypress Swamp - Areas near the Cypress Swamp, Edisto River, the Twin Lakes subdivision, and portions of The Ponds subdivision. All residents living in flood-prone areas or mobile/manufactured homes.

3. Charleston County Evacuation Zones

- a. Zone A - West of the Ashley River - Unincorporated areas of Charleston County from the Ashley River to the Colleton County line; Atlantic Ocean to the Dorchester County line. This includes the towns of Hollywood, Meggett, Ravenel, Folly Beach, Rockville, Kiawah Island, and Seabrook Island, Johns Island, Wadmalaw Island, and unincorporated Charleston County.
- b. Zone B - Central Charleston - From the tip of the Peninsula to Ladson Road; from the Ashley River to the Wando River. This includes the cities of Charleston, North Charleston, and Lincolnville, as well as Daniel Island, Thomas Island, and unincorporated Charleston County.
- c. Zone C - East of the Wando River - Unincorporated areas of Charleston County from the Atlantic Ocean to the Berkeley County line; Wando River to the Georgetown County line. This includes the towns of Mt. Pleasant, Isle of Palms, Sullivan's Island, Awendaw, and McClellanville, as well as Dewees Island, Capers Island, and Goat Island.
- d. In all cases, residents living in low-lying areas along rivers, streams, and creeks, and all manufactured housing should evacuate when announced.

C. Southern Conglomerate Evacuation Zones



1. Colleton County Evacuation Zones
 - a. Zone A - All areas south of the CSX Railroad, and all mobile homes and other floodplain areas in the County.
 - b. Zone B - All areas east of I-95 from the southern county line to Walterboro and all areas south of Alt. U.S. 17 from Walterboro to the northern county line plus all mobile homes and other floodplain areas in the County.
2. Beaufort County Evacuation Zones
 - a. Zone A - All residents and tourists are to evacuate.
3. Jasper County Evacuation Zones
 - a. Zone A - All areas east of I-95 and all mobile homes and other floodplain areas in the county.
 - b. Zone B - All areas east of I-95 and all areas south of Sand Hills Road (Hwy. 119) and Tillman Road (Hwy. 336), plus all mobile homes and other floodplain areas in the county.