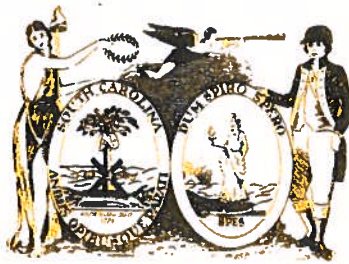


State of South Carolina
Executive Department

FILED

SEP 01 2019

Mark Hammond
SECRETARY OF STATE



Office of the Governor

EXECUTIVE ORDER NO. 2019-28

WHEREAS, the National Hurricane Center has determined from the latest forecast models that Hurricane Dorian, which is currently a category 5 hurricane, may impact the State of South Carolina and other areas in the southeastern region of the United States; and

WHEREAS, the undersigned has been advised that Hurricane Dorian, including the associated wind, heavy rain, flash flooding, and other severe weather, represents a significant threat to the State of South Carolina, which requires that the State take timely precautions to protect and preserve property, critical infrastructure, communities, and the general safety and welfare of the people of this State; and

WHEREAS, due to the potential impact of Hurricane Dorian, the undersigned issued Executive Order No. 2019-26 on August 31, 2019, declaring that a State of Emergency exists throughout the State of South Carolina and activating the South Carolina Emergency Operations Plan to provide for the health, safety, and welfare of residents and visitors located in the threatened areas; and

WHEREAS, as the elected Chief Executive of the State, the undersigned is authorized pursuant to section 25-1-440 of the South Carolina Code of Laws, as amended, to direct and compel the evacuation of all or part of the populace from any stricken or threatened area if such action is considered necessary for the preservation of life or other emergency mitigation, response, or recovery; and

WHEREAS, upon consultation with the South Carolina Emergency Management Division (“EMD”) and other authorities, the undersigned has determined that an evacuation is necessary for the preservation of life in and surrounding the threatened areas or for other emergency mitigation, response, or recovery efforts.

NOW, THEREFORE, by virtue of the authority vested in me as the Governor of the State of South Carolina and pursuant to the Constitution and Laws of this State and the powers conferred upon me therein, I hereby order and direct as follows:

Section 1. I hereby order the evacuation, effective at noon, September 2, 2019, of all persons located in the following Evacuation Zones, which are detailed further in **Exhibit A**: Jasper (Zone A), Beaufort (Zone A), Colleton (Zones A and B), Charleston (Zones A, B, and C), Dorchester (Zone D), Berkeley (Zones B and G), Georgetown (Zone A), and Horry (Zone A), with the exception of those critical or emergency response personnel, as designated by the appropriate municipal, county, or special purpose district officials, necessary to provide essential services during or immediately following the event. All other persons are ordered to evacuate the affected areas as expeditiously as possible.

Any persons or non-emergency management personnel who remain in the Evacuation Zones, and any medical facilities, nursing home facilities, businesses, or other organizations or entities that allow or require persons under their charge to remain in the Evacuation Zones are responsible for the safety and well-being of themselves and of those under their charge. Any such persons or entities are hereby charged with the knowledge that should they need the assistance of emergency personnel or services, those personnel or services may not be available or capable of rendering aid. Persons in other areas near the projected path of Hurricane Dorian should take all precautions necessary to ensure their protection from potential high winds, heavy rain, localized flooding, and other severe weather.

Section 2. I hereby direct that specified units of the South Carolina National Guard, at the discretion of the Adjutant General and in consultation with the Director of the EMD, may remain on duty to assist civil authorities in these areas, including Emergency Support Functions 13 and 16, the South Carolina Department of Public Safety (“DPS”), and the South Carolina Law Enforcement Division (“SLED”), with such personnel taking all reasonable and necessary precautions for the preservation of life and property. The South Carolina National Guard may supplement units as needed, and DPS may remain on duty and available to assist with all traffic control points as necessary and assigned.

This Order is effective immediately. Further proclamations, orders, and directives deemed necessary to ensure the fullest possible protection of life and property during this State of Emergency shall be issued verbally by the undersigned and thereafter reduced to writing and published for dissemination within the succeeding 24-hour period.



GIVEN UNDER MY HAND AND THE GREAT SEAL OF THE STATE OF SOUTH CAROLINA, THIS 1st DAY OF SEPTEMBER, 2019.

A handwritten signature in blue ink, reading "Henry McMaster".

HENRY MCMASTER
Governor

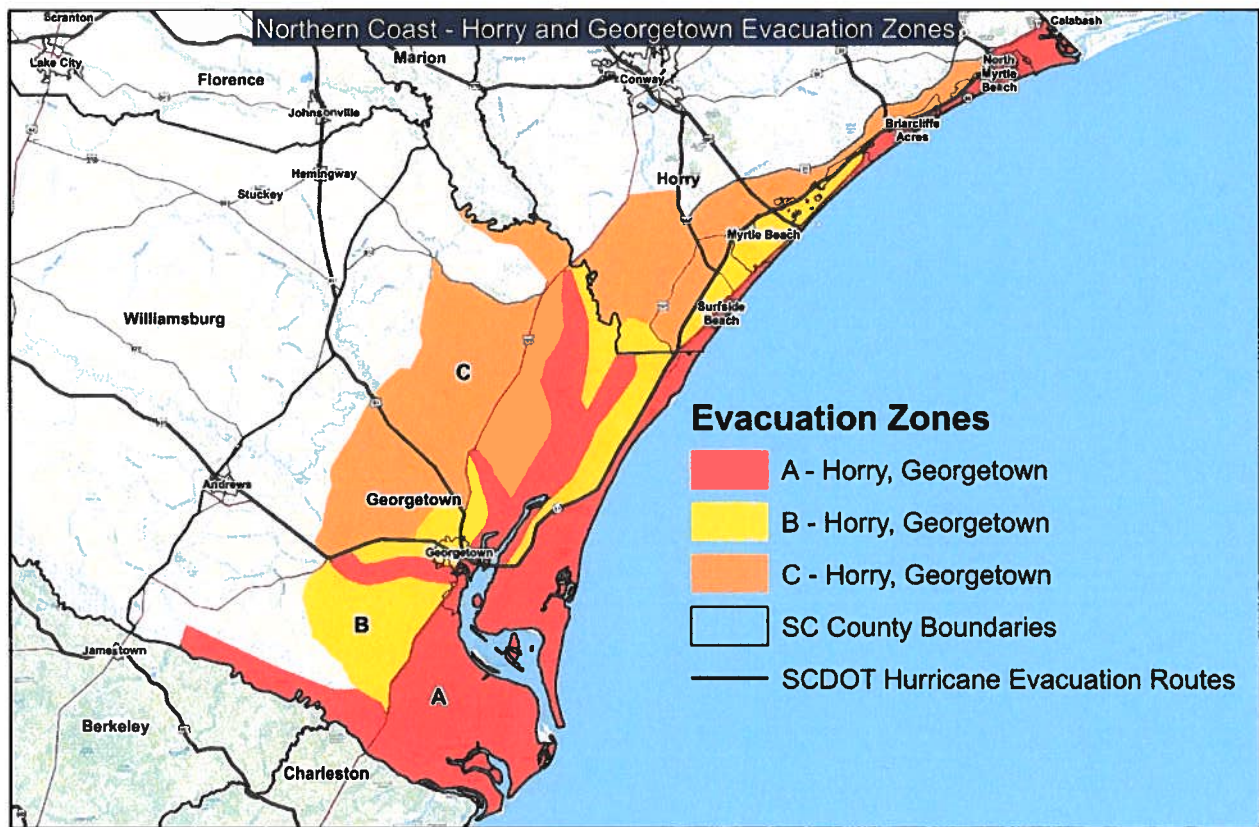
ATTEST:

A handwritten signature in blue ink, reading "Mark Hammond".

MARK HAMMOND
Secretary of State

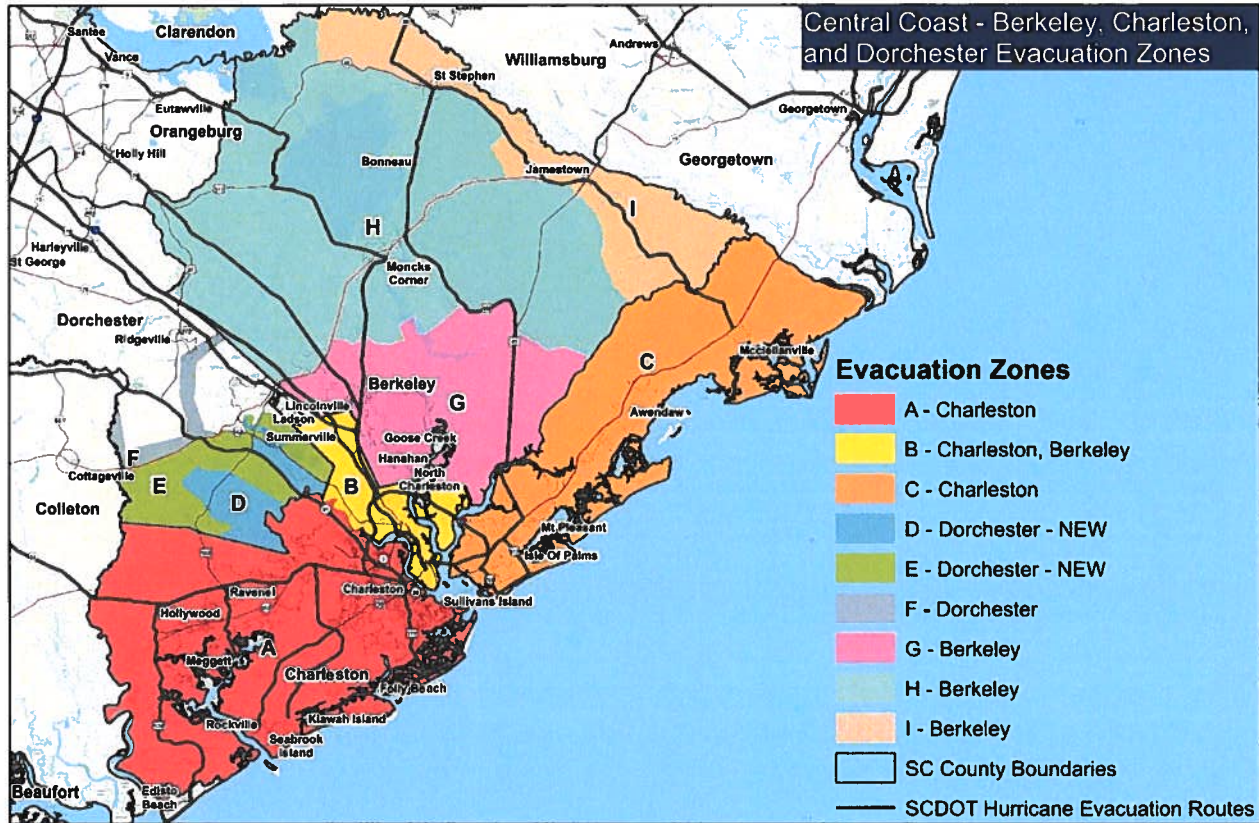
EXHIBIT A. EVACUATION ZONES

A. Northern Conglomerate Evacuation Zones



1. Horry County Evacuation Zones
 - a. Zone A: All areas east of U.S. Business 17 (Kings Hwy.), up to the intersection with U.S. 17 (Kings Hwy.), and then all areas east of U.S. 17 (Kings Hwy.) to the northern county line.
2. Georgetown County Evacuation Zones
 - a. Zone A: Areas east of Hwy. 17 to the Atlantic Ocean from the South Santee River and north to the Horry County line, including Sandy Island; areas east of Dawhoo Lake, and south of Walker Road and Powell Road to the South Santee River; all low-lying areas along the Waccamaw River, Great Pee Dee River, Black River, and Sampit River south of Hwy. 521 (17A), including Maryville.

B. Central Conglomerate Evacuation Zones



1. Berkeley County Evacuation Zones

- a. Zone B: See 3.b. below and the map.
- b. Zone G:

- (1) Hanahan: North of Woods Avenue from end of road at east edge of rail yard to its intersection with Remount Road. North of Remount Road from its intersection with Woods Avenue to its intersection with the railroad tracks just west of Dutton Avenue. East of the railroad tracks from their intersection with Remount Road to crossing over the Goose Creek (just south of Middle Earth Nursery and Infinger Furniture).
- (2) Goose Creek/Ladson/Summerville: Including areas northeast of the intersection of Hwy. 52 and Camelot Drive, continuing along Ryan Drive and Holly Avenue across to Westview Blvd. (includes buildings on both sides of Camelot Drive, Ryan Drive, and Holly Avenue). Crowfield Plantation from Westview Blvd. near Holly Avenue across I-26 along Ancrum Road to its intersection with Hwy. 78. Northeast of Hwy. 78 from its intersection with Ancrum Road (Ladson Road) to its intersection with Hwy. 17A (Main St.) in Summerville. Southeast of Hwy. 17A (Main

Street/S. Live Oak Drive) from its intersection with Hwy. 78 to its intersection with Cypress Gardens Road.

(3) Whitesville/Pimlico/Cordesville: South of Cypress Gardens Road from its intersection with Hwy. 17A (S. Live Oak Drive) to its intersection with Pimlico Blvd. South of Pimlico Blvd. from its intersection with Cypress Gardens Road through to its end. The area east of Wappaolah Plantation and west of the Cooper River, north of Pimlico Blvd., and south of Mepkin Abbey. Southeast of the railroad tracks from the Cooper River by Pimlico to its intersection with Hwy. 402.

(4) Huger/Cainhoy/Wando: South of Hwy. 402 from its intersection with the railroad tracks near Cordesville to its intersection with Hwy. 41 (Hwy. 402 becomes Steed Creek Road). Southwest of Steed Creek Road from its intersection with Hwy. 41 to its intersection with Halfway Creek Road. West of Halfway Creek Road from its intersection with Steed Creek Road to its intersection with Guerins Bridge Road. West of Guerins Bridge Road from its intersection with Halfway Creek Road to its intersection with Wando River (just after Drew Lane). Northwest of the Wando River from its intersection with Guerins Bridge Road to its intersection with Nowell Creek. North/northeast of Nowell Creek from its intersection with the Wando River to its intersection with Rebellion Farms Place. Northeast of Rebellion Farms Place from its intersection with Nowell Creek to its intersection of Clements Ferry Road. Northeast of Yellow House Place from its intersection with Clements Ferry Road to the Cooper River (across from the Goose Creek).

2. Dorchester County Evacuation Zones

a. Zone D: Tidal River and Creeks/Southern Swamps: All areas along the Ashley River between Ashley River Road and Dorchester Road, from the Charleston County line to Bacons Bridge Road. Areas that front the Sawmill Branch from Dorchester Road to Luden Road. Areas near Eagle Creek between Ladson Road and Parlor Road from Dorchester Road to the Charleston County line. Southeastern portions of the county in the vicinity of Bear Swamp, Horse Savannah Swamp, Fishburne Creek, and Rantowles Creek, including the Poplar Grove Community.

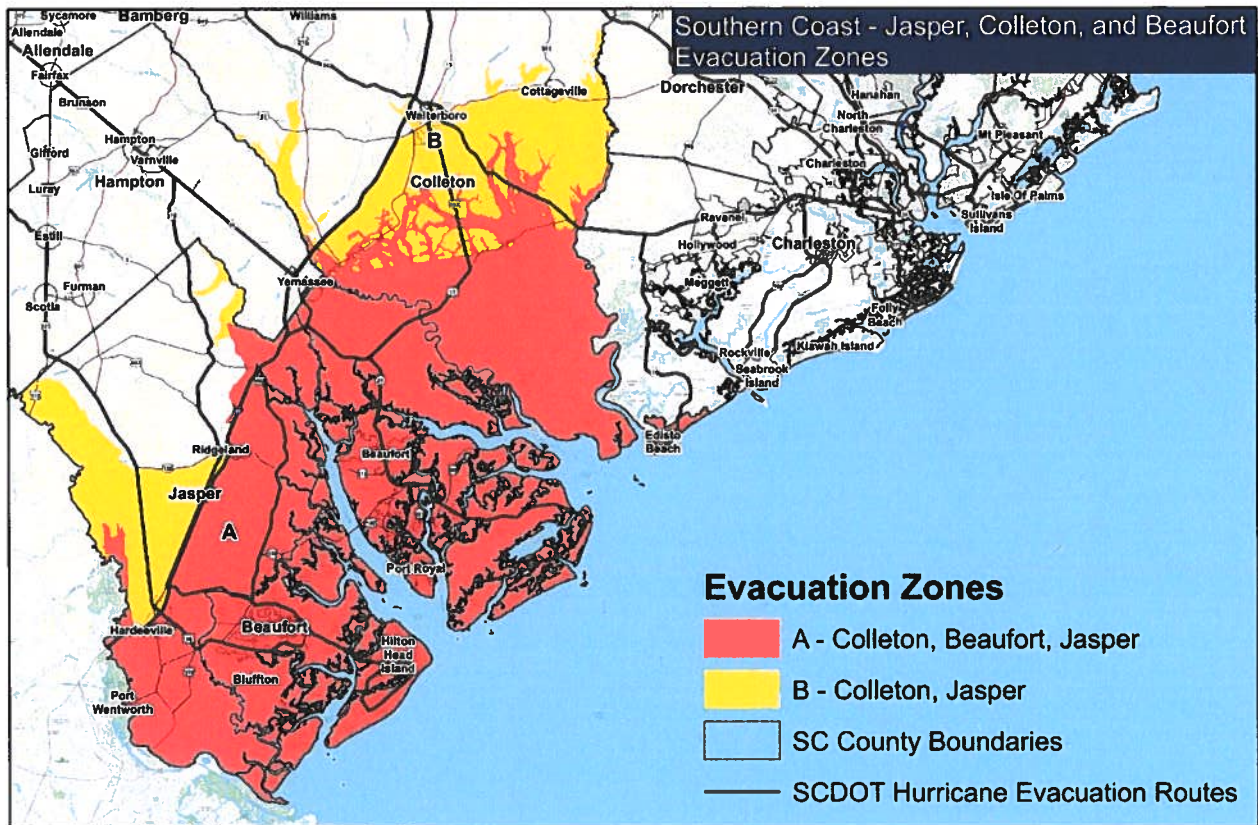
3. Charleston County Evacuation Zones

a. Zone A: West of the Ashley River: Unincorporated areas of Charleston County from the Ashley River to the Colleton County line; Atlantic Ocean to the Dorchester County line. This includes the towns of Hollywood, Meggett, Ravenel, Folly Beach, Rockville,

Kiawah Island, and Seabrook Island, as well as Johns Island, Wadmalaw Island, and unincorporated Charleston County.

- b. Zone B: Central Charleston: From the tip of the Peninsula to the Dorchester County line; from the Ashley River to the Wando River. This includes the cities of Charleston, North Charleston, and Lincolnton, as well as Daniel Island, Thomas Island, and unincorporated Charleston County.
- c. Zone C: East of the Wando River: Unincorporated areas of Charleston County from the Atlantic Ocean to the Berkeley County line; Wando River to the Georgetown County line. This includes the towns of Mt. Pleasant, Isle of Palms, Sullivan's Island, Awendaw, and McClellanville, as well as Dewees Island, Capers Island, and Goat Island.

C. Southern Conglomerate Evacuation Zones



1. Colleton County Evacuation Zones
 - a. Zone A: All areas south of the CSX Railroad, and other floodplain areas in the county.
 - b. Zone B: All areas east of I-95 from the southern county line to Walterboro and all areas south of Alt. U.S. 17 from Walterboro to the northern county line, and other floodplain areas in the county.
2. Beaufort County Evacuation Zones
 - a. Zone A: All areas are to evacuate.
3. Jasper County Evacuation Zones
 - a. Zone A: All areas east of I-95, and other floodplain areas in the county.